

# EHR Readiness

Is your network ready for an EHR?

# EHR Readiness


- ▶ Welcome
- ▶ Introduction

Kari Lidstone

Network Services Supervisor  
MMIC Technology Solutions



# Agenda

- ▶ IT Resources
  - ▶ Equipment/Hardware
  - ▶ Housing the EHR
  - ▶ Implementation and Ongoing Support
- 

# IT Resources


- ▶ Knowledge of Existing Network
- ▶ Trusted Technical Advisor
- ▶ IT Asset Inventory



# IT Asset Inventory

PC ID	Location	Type	Operating System	RAM (MB)	CPU Speed	Manufacturer	Product Name
MedRec001	Medical Records Area – Bay 1	Laptop	XP	1014	1662 MHz	Dell Inc.	Latitude D820
MedRec002	Medical Records Area – Bay 2	Desktop Workstation	Vista	1975	800 MHz	LENOVO	7417TSU
BusOff001	Business Office – Lori	Desktop Workstation	XP	2014	1184 MHz	Dell Inc.	OptiPlex 755
BusOff002	Business Office – Jennifer	Desktop Workstation	XP	2014	1184 MHz	Dell Inc.	OptiPlex 755
Prov001	Dr. Smith	Tablet	Vista	1975	1600 MHz	Toshiba	L500
Prov002	Dr. Jones	Tablet	Vista	1975	1600 MHz	Toshiba	L500
Server ID	Location	Type	Operating System	RAM (MB)	CPU Speed	Manufacturer	Product Name
EHR/Database	Server Room		Windows 2003 Standard	4 GB	2.6 GHz	HP	ProLiant DL300
File Server	Server Room		Windows 2003 Standard	4 GB	2.6 GHz	HP	ProLiant DL300
Network Peripherals	Location	Type	Notes				
HP Printer	Business Office	IP Printer	2 Trays				
Konica	Medical Records	IP Printer, Scanner					

# Equipment/Hardware

- ▶ Personal Computers
  - ▶ Servers
  - ▶ Network Connectivity
  - ▶ Network Equipment
  - ▶ Peripherals
- 

# Personal Computers (PCs)

## ▶ Desktop Computers

- Additions, Upgrades, Replacements
- PC Location



## ▶ Desktops vs. Tablets

- Provider Workflow



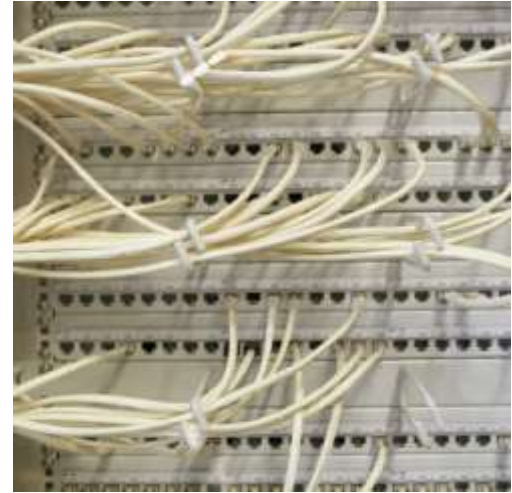
# Servers

- ▶ **EHR Servers**
  - Database, Application, Terminal Servers
- ▶ **Domain Controller**
  - Domain vs. Workgroup
- ▶ **Other Servers**
  - DICOM, PACS, etc.



# Network Connectivity

- ▶ Network Cabling
- ▶ Wired vs. Wireless



# Network Equipment

- ▶ Switches

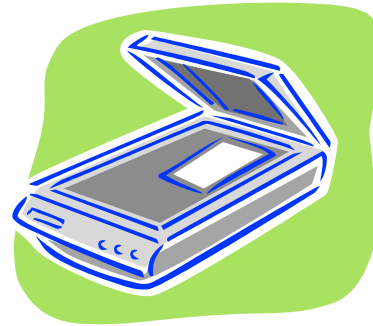
- ▶ Routers

- ▶ Firewalls



# Peripherals


- ▶ Printers
- ▶ Scanners
- ▶ Faxing




# Housing the EHR

- ▶ Local Installation
  - ▶ Hosted Environments
- 


# Local Installations

- ▶ Physical Space
  - ▶ HVAC Requirements
  - ▶ Electrical Requirements
  - ▶ Security of Server/LAN Room
- 


# Hosted EHR Environment

- ▶ **Different Hosting Facilities**
    - Co-location vs. Managed Servers vs. ASP
  - ▶ **Facility's Responsibilities**
    - Electrical, HVAC
  - ▶ **Data Protection Strategy**
    - Backups, Disaster Recovery
- 

# Remote Offices

- ▶ **Connectivity Requirements**
    - Bandwidth Requirements
    - Terminal Server or Citrix
  
  - ▶ **Scanning Strategy**
- 

# Implementation and Ongoing Support

- ▶ Clear understanding of responsibility
  - ▶ Post Installation – role of EHR vendor
- 

# EHR Readiness

## Summary of Recommendations

- ▶ Leverage Your Trusted IT Advisor
  - ▶ Utilize an IT Asset Inventory
  - ▶ Understand Split of Responsibilities
- 

# Upcoming Educational Seminars

- ▶ EHR Implementation Best Practices
  - January 28th, 12:00 p.m. CST

Visit [www.mmigroup.com](http://www.mmigroup.com) to register

Questions?